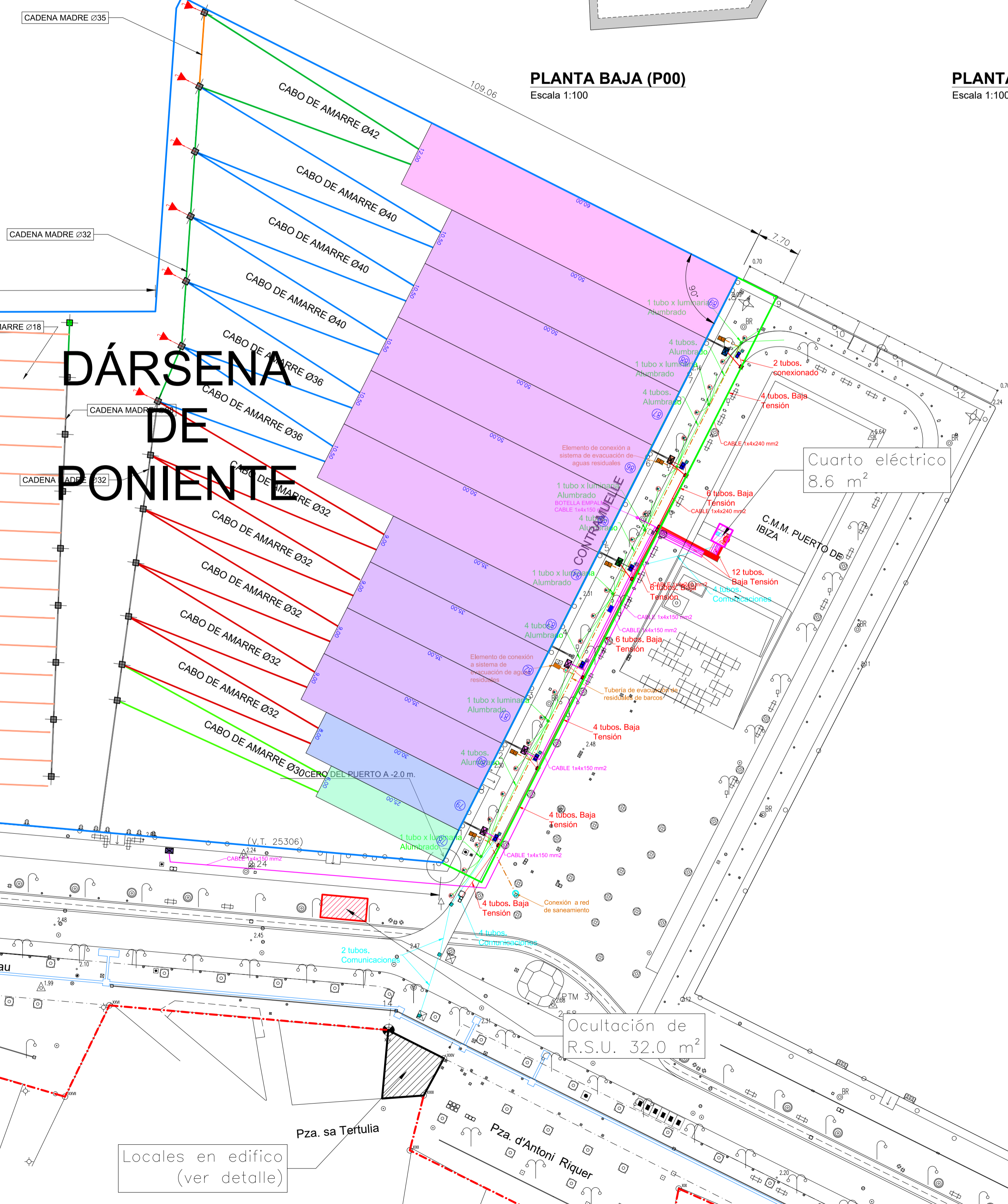
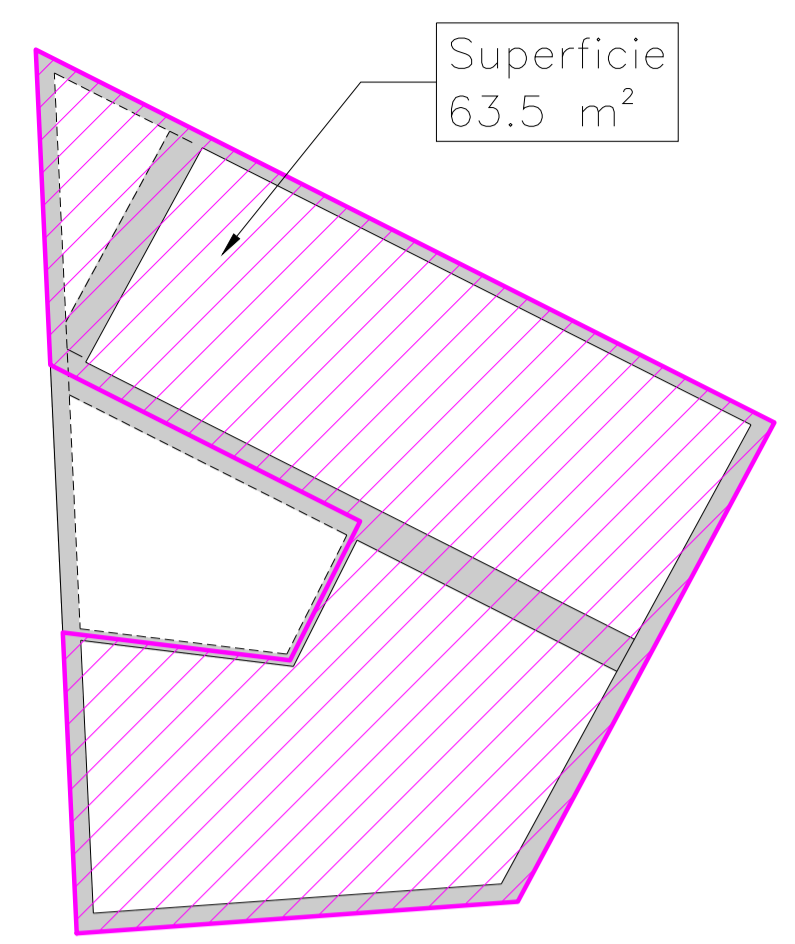
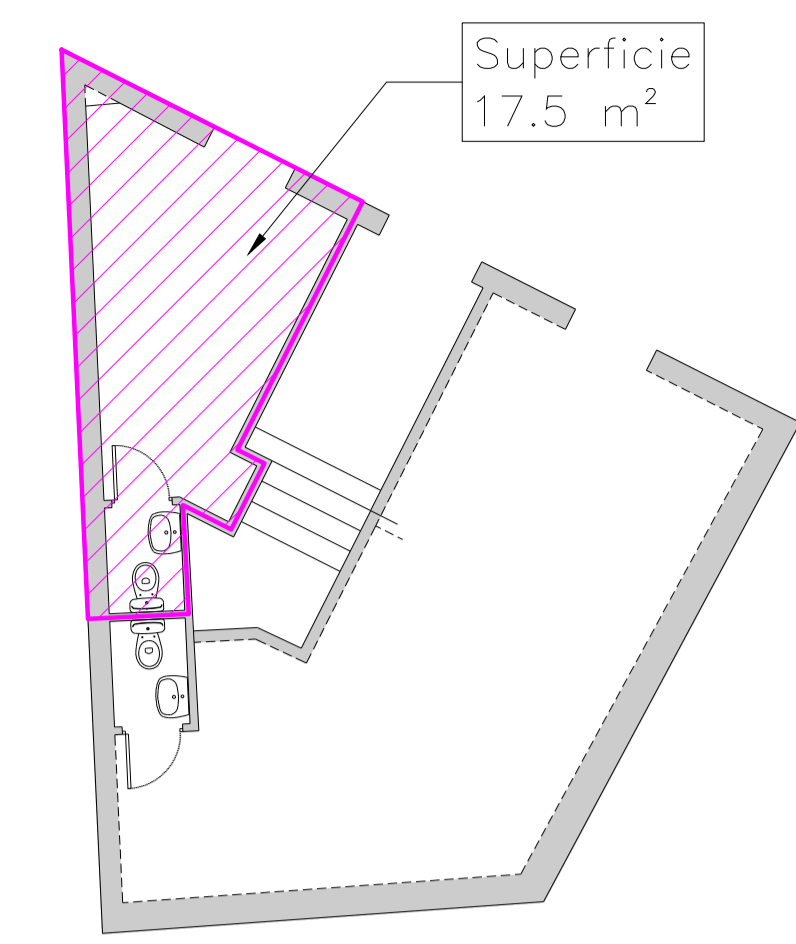


Flota			
Unidades	Eslora (m)	Manga (m)	Superficie (m ²)
3	6.50	3.00	58.5
1	7.00	3.50	24.5
2	7.50	3.50	52.5
2	8.00	3.50	56.0
5	8.50	3.50	148.8
7	9.00	3.50	220.5
3	10.00	3.75	112.5
21	12.00	3.80	957.6
21	12.00	4.00	1008.0
17	15.00	5.00	1275.0
1	25.00	6.00	150.0
1	30.00	8.00	240.0
4	35.00	9.00	1260.0
5	50.00	10.50	2625.0
1	60.00	12.00	720.0
94			8908.9
Longitud de líneas de atraque incluidas en el expediente 341.6 m			

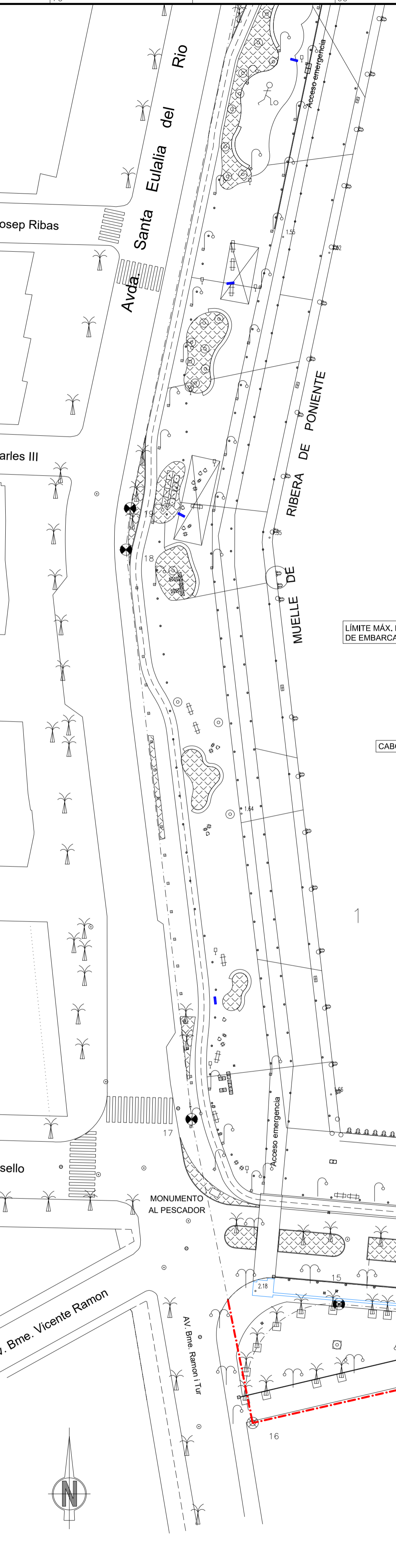
LEYENDA

 2 AMARRES RESERVADOS A LA A.P.B. (12m x 4m y 15m x 5m)






PLANTA PISO (P01)
Escala 1:100






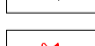
PLANTA BAJA (P00)
Escala 1:100



LEYENDA

-  TORRETA 2x400A. 2 TOMAS AGUA
-  TORRETA 1x400A+1x250A. 2 TOMAS AGUA
-  TORRETA 2x250A. 2 TOMAS AGUA
-  TORRETA 2x125A. 2 TOMAS AGUA
-  TORRETA 1x125A. 1 TOMA AGUA
-  CANALIZACIONES: SEGUN PLANO

LEYENDA

-  CABO DE AMARRE INICIAL Ø242 MM
-  CABO DE AMARRE INICIAL Ø336 MM
-  CABO DE AMARRE INICIAL Ø332 MM
-  CABO DE AMARRE INICIAL Ø330 MM
-  MUERTOS
-  ANCLA DE FONDEO DE 1.5 TN

*CABOS GUIA DE Ø16 MM